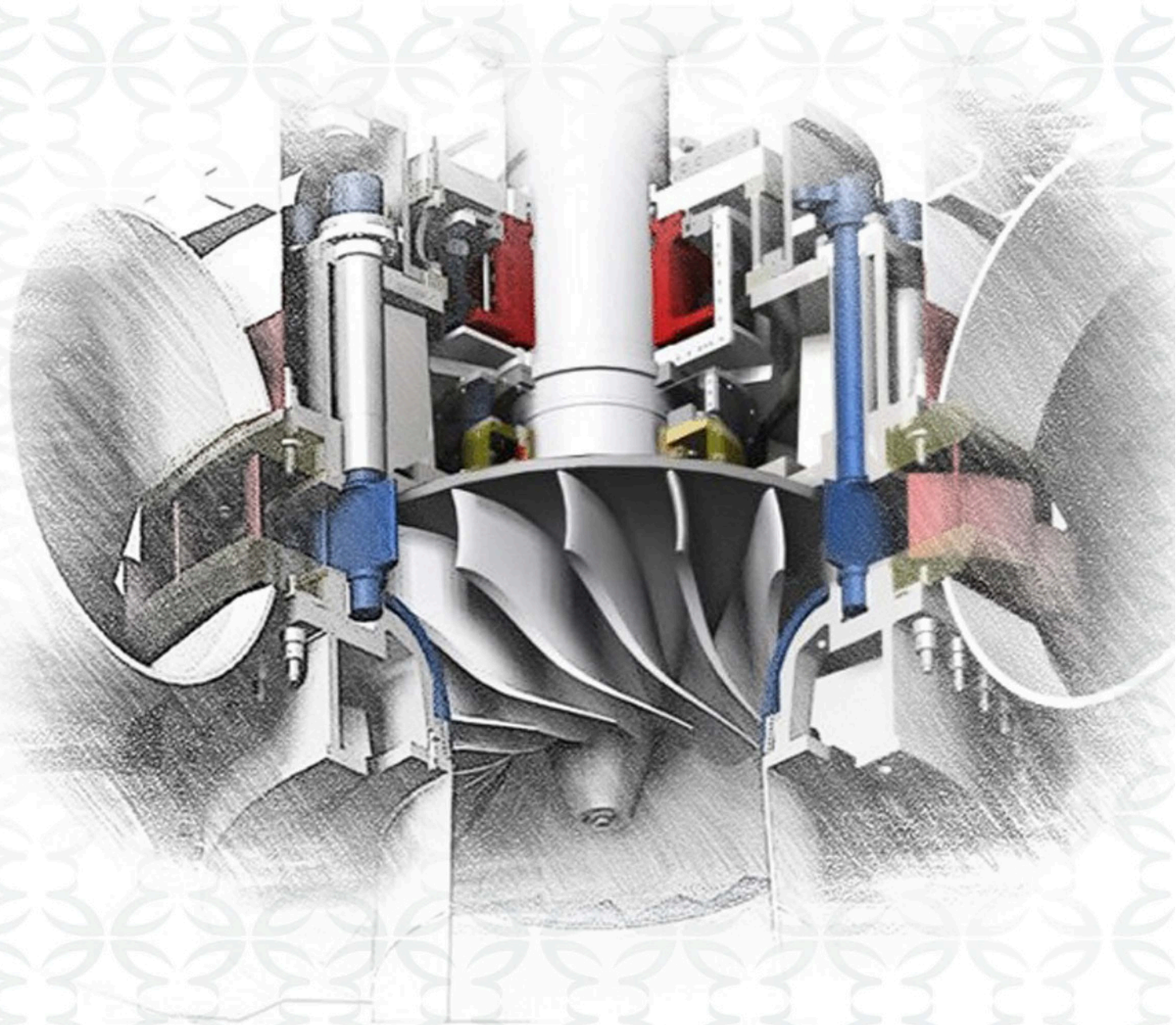




PRESENTATION
HYDRO
2025



POWER BEHIND THE ENERGY

www.sesanindustry.com.tr | info@sesanindustry.com.tr



ABOUT US

Founded in 2010 in Adana/Turkiye, **Sesan Industry** has rapidly grown into a significant player in the manufacturing sector of energy, iron-steel, and heavy industrial equipment, operating both domestically and internationally. Emphasizing continuous improvement, lean manufacturing principles, and innovative production methods, our company delivers reliable solutions to complex challenges in the energy and heavy industry sectors.

Sesan Endüstri places great importance on post-production quality control and assurance systems, implementing a rigorous inspection process to ensure that every product meets the highest standards. Our quality team, composed of certified experts and advanced technology equipment, conducts thorough checks at every stage, guaranteeing durable products that meet customer expectations.



Power Behind The Industry | www.sesanindustry.com.tr | info@sesanindustry.com.tr

BUTTERFLY VALVES

Our company can desing, manufacture and perform final testing butterfly valves with EN ISO 9001 Quality Management System

RANGE OF MANUFACTURING Diameter : DN500mm - DN4000mm2

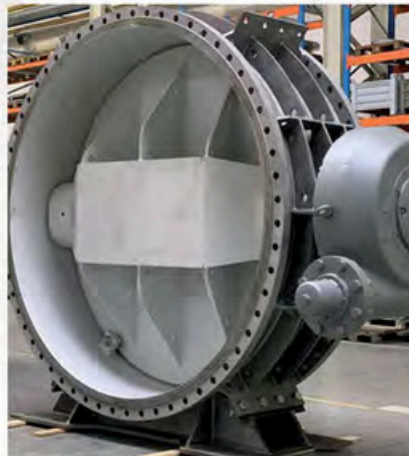
Pressure: Up to PN40

The valve dimensions can be adapted to fit with the existing site conditions;

Sealing System: Rubber seated in metal

Geometrical Feature: Double eccentric

Single Action Operating: Opening by hydraulic pressure, closing by counterweight;



DISMANTLING JOINTS

PRODUCTION RANGE:

Diameter: DN500mm-DN4000mm

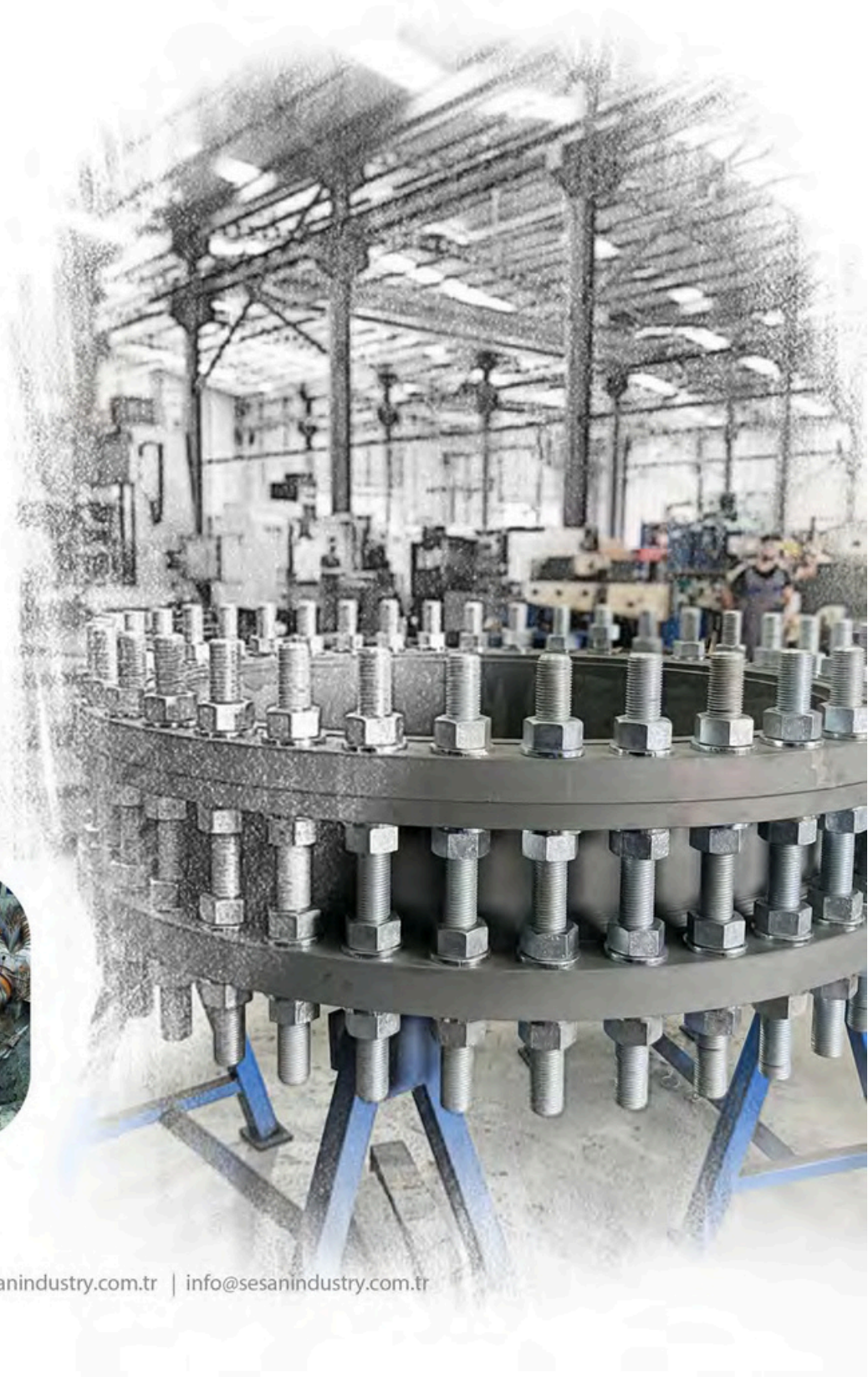
Pressure: Up to PN40

EXPANSION JOINTS

PRODUCTION RANGE:

Diameter: DN500mm-DN4000mm

Pressure: Up to PN40



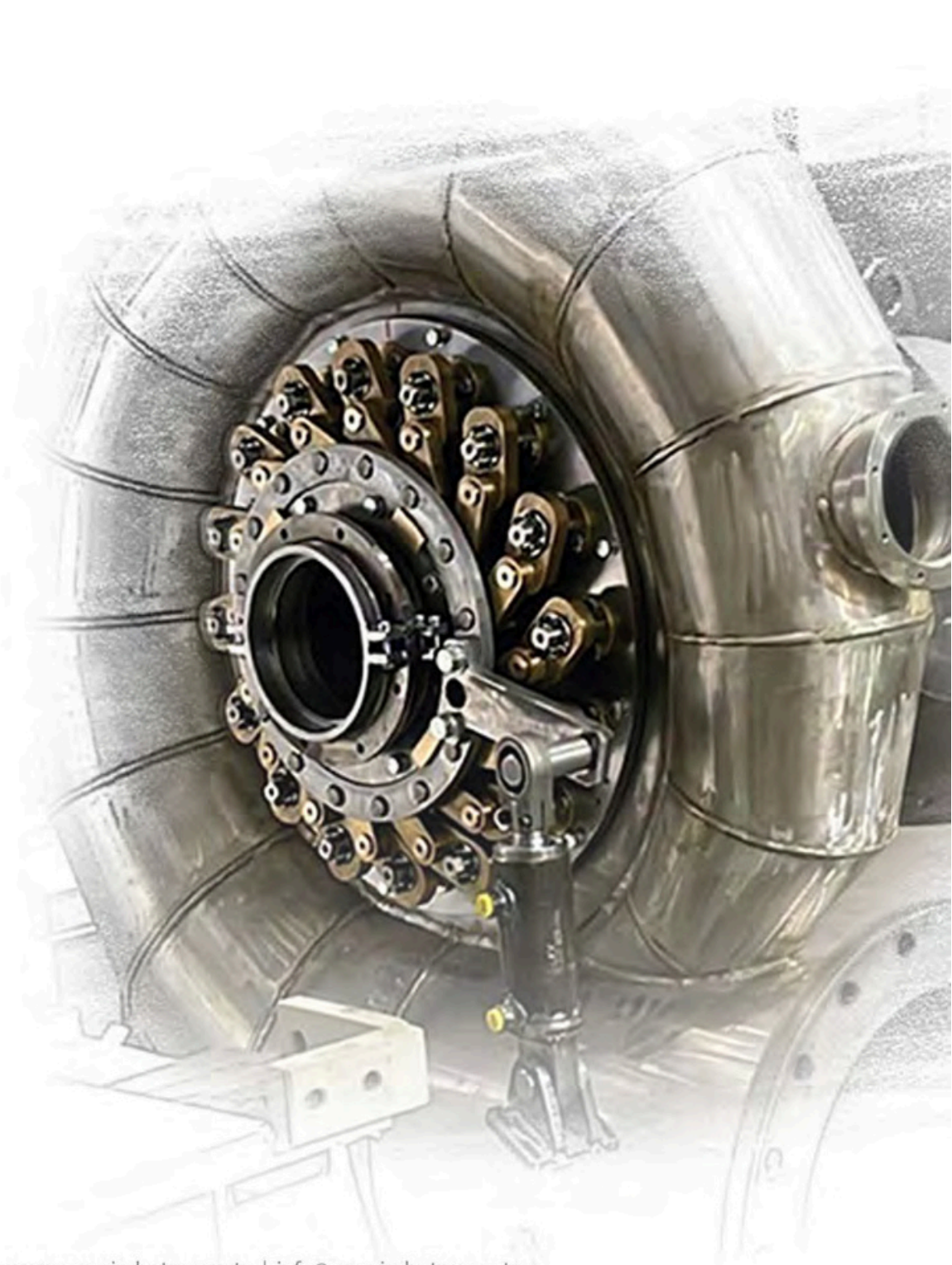
TURBINE EQUIPMENT

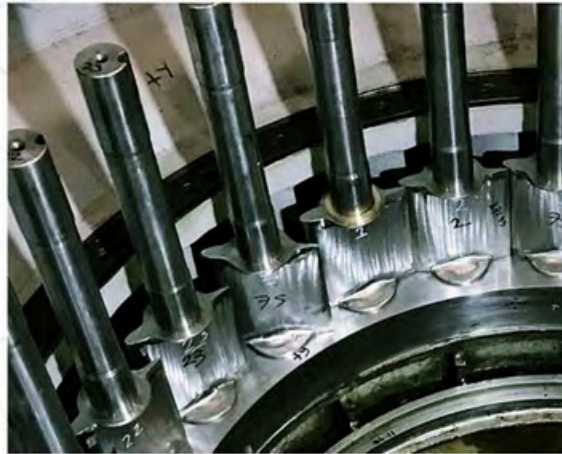
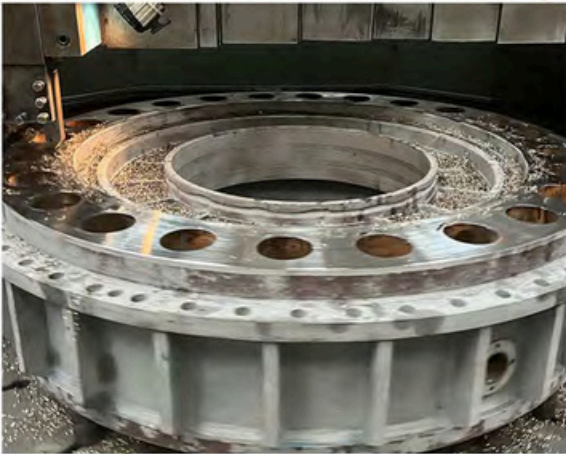
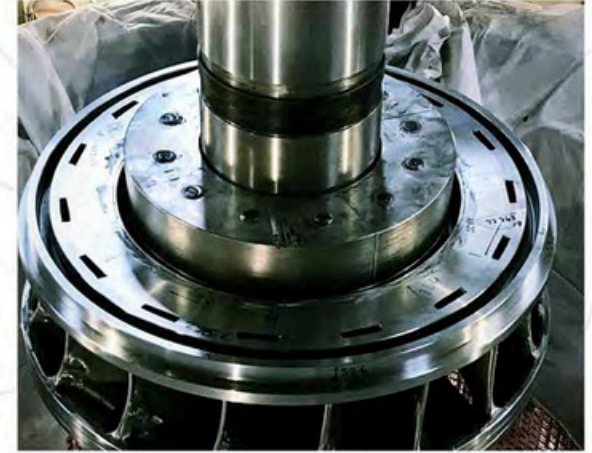
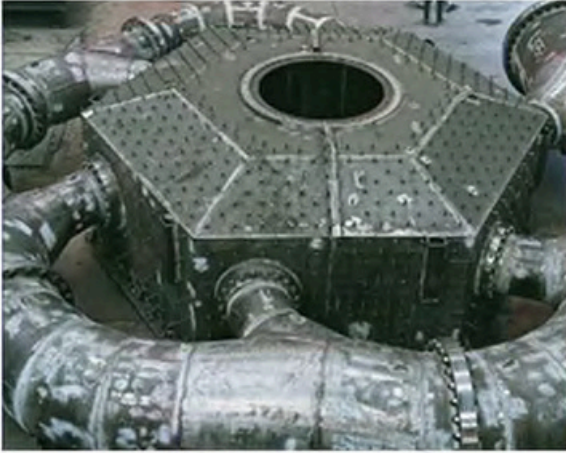
The production of equipment for Kaplan, Francis and Pelton turbines and electromechanical structures used in hydroelectric power plants is carried out within our company.

Products We Design and Manufacture

Spiral Case
Draft Tube
Pit Liner
Head Covers
Wicket Gate
Runners

Guide Vanes
Head Cover
Stay Rings
Bottom Rings
Main Shaft
Inlet Valve

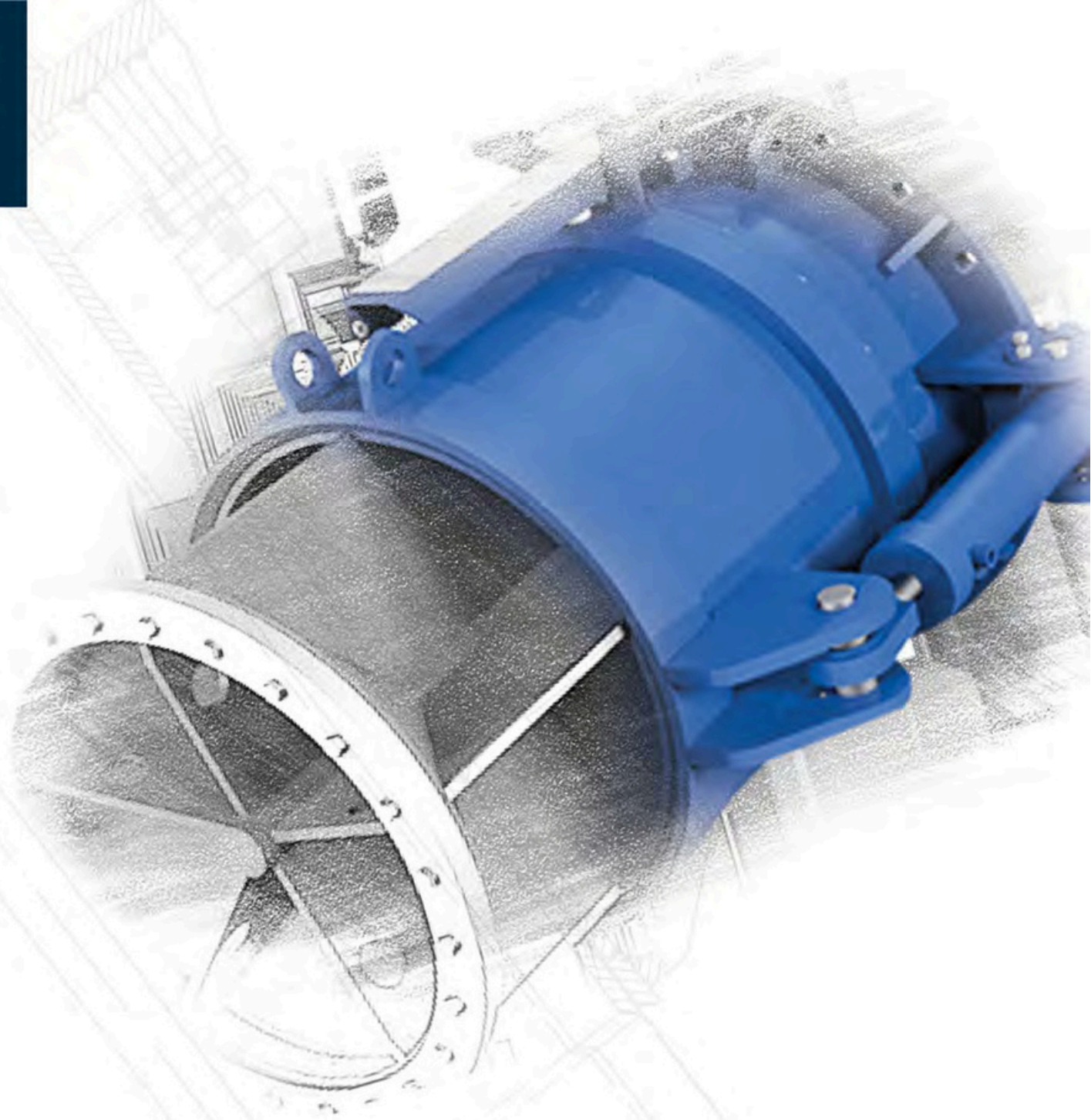




CONE VALVES

Founded in 2010 in Adana/Turkiye, **Sesan Industry** has rapidly grown into a significant player in the manufacturing sector of energy, iron-steel, and heavy industrial equipment, operating both domestically and internationally. Emphasizing continuous improvement, lean manufacturing principles, and innovative production methods, our company delivers reliable solutions to complex challenges in the energy and heavy industry sectors.

Sesan Endüstri places great importance on post-production quality control and assurance systems, implementing a rigorous inspection process to ensure that every product meets the



GATE VALVES

Founded in 2010 in Adana/Turkiye, **Sesan Industry** has rapidly grown into a significant player in the manufacturing sector of energy, iron-steel, and heavy industrial equipment, operating both domestically and internationally. Emphasizing continuous improvement, lean manufacturing principles, and innovative production methods, our company delivers reliable solutions to complex challenges in the energy and heavy industry sectors.

Sesan Endüstri places great importance on post-production quality control and assurance systems, implementing a rigorous inspection process to ensure that every product meets the



Power Behind The Industry | www.sesanindustry.com.tr | info@sesanindustry.com.tr



OUR REFERENCES

ANDRITZ
Hydro

VOITH


GEPPERT
HYDRO



GlobalHydro

-MUHR-

 **LITOSTROJ**
POWER

CONSOLIS
PHILBERT

Metso

 **VAG**

 **GUGLER**
TECHNOLOGY FOR HYDROPOWER PLANTS



SOCIÉTÉ DE SERVICE
ENTREPRISE DE TRANSPORT **SSEI**

SIEMENS



MERKEZ FABRİKA

Ova Mah. 44346 Sk. No:3/J Seyhan/**ADANA**

+90 322 429 49 46 - +90 322 429 49 47 - +90 322 429 49 48

ANKARA OFİS

Eskişehir Yolu Söğütözü Mah. 2177 Sk No:10/B Wia Twins Plaza Çankaya/**ANKARA**

+90 312 437 72 72

Power Behind The Industry | www.sesanindustry.com.tr | info@sesanindustry.com.tr